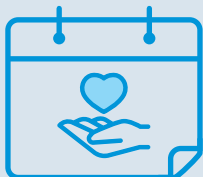


Blue Shield of California's Palliative Care Program

Improving care for the seriously ill



Serious illness can affect people of any age, and patients may live for many years or be near the end of life.



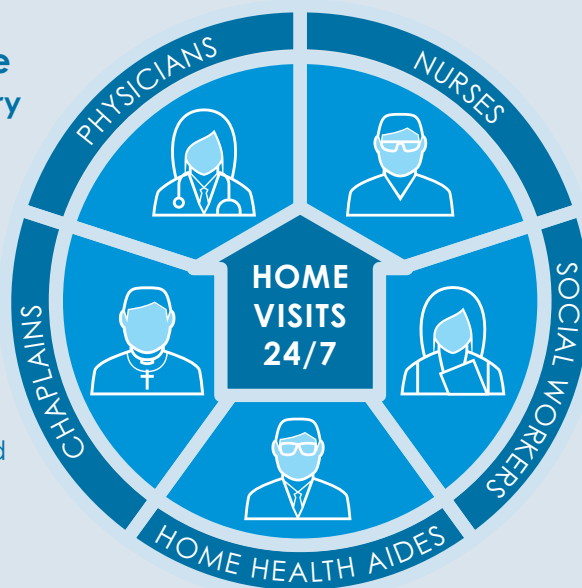
Today, more than **90 million Americans** live with serious illness. This number is likely to double by 2040.¹



Palliative care is patient- and family-centered care that prioritizes quality of life and **seeks to ease the symptoms** of serious illness by addressing physical, intellectual, emotional, social, and spiritual needs.

Home-based palliative care is provided by an **interdisciplinary team** that delivers in-home services, including:

- Care management and coordination
- Pain and symptom management
- Meal delivery and transportation in certain cases
- Help with treatment decisions and care planning



Home-based palliative care **reduces unnecessary ER visits** and hospitalizations.²



96%

The average **patient and family satisfaction score** for Blue Shield of California's home-based palliative care programs

70%

70% of Californians say they would prefer to remain in their homes at the time of their death.³

32%

But, only **32%** of Californians pass away at home.³

90%

90% of Blue Shield of California members enrolled in palliative care who have passed away did so at home, **according to their wishes.**

For more information, visit blueshieldca.com/palliativecare.

Sources: ¹Center to Advance Palliative Care, ²Journal of Palliative Medicine, ³California Health Care Foundation